

I had a piece of pine wood from an old shelf.

We bought this beautiful lithography from an auction, but we didn't like the frame.

I thought this could be a good first project for an amateur

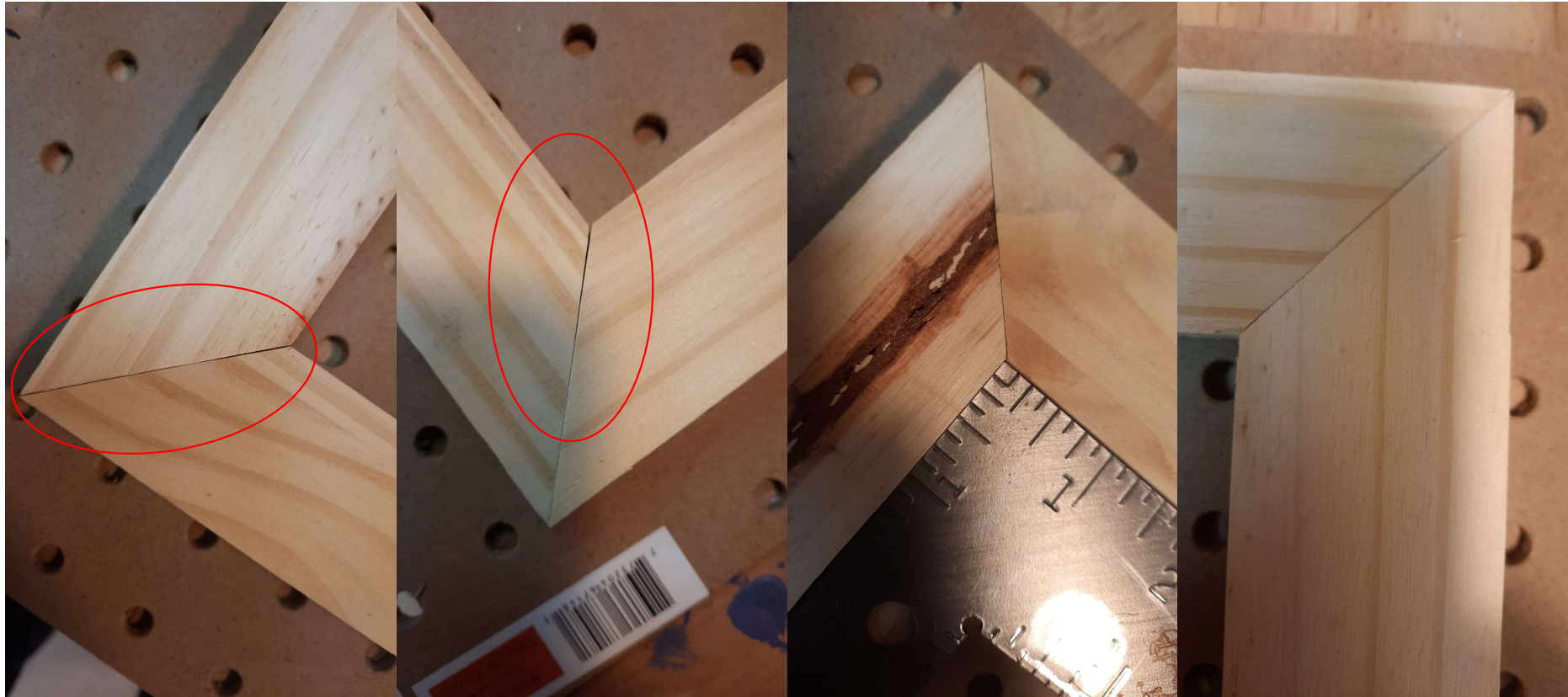


Used table saw and miter saw for cutting.

I have a new blade from my miter saw to make more precise cuts

Made one extra side (total of 6 instead of 4) just in case I make mistakes! Which I did :D

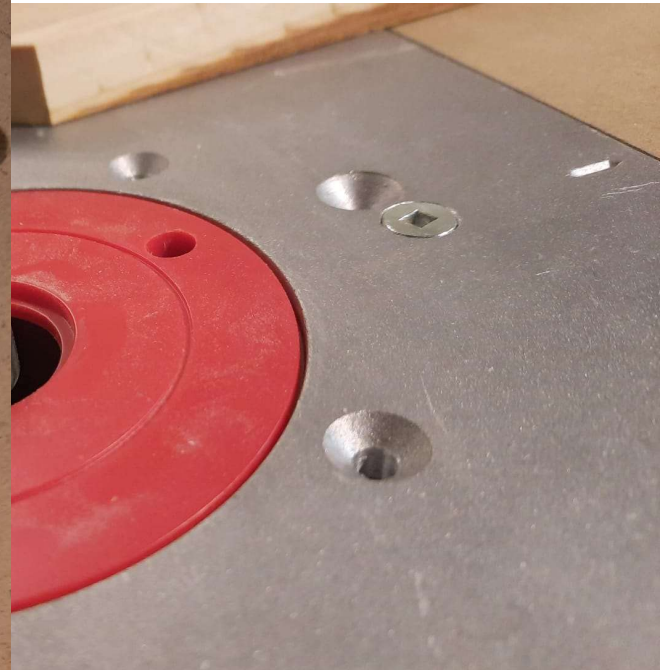
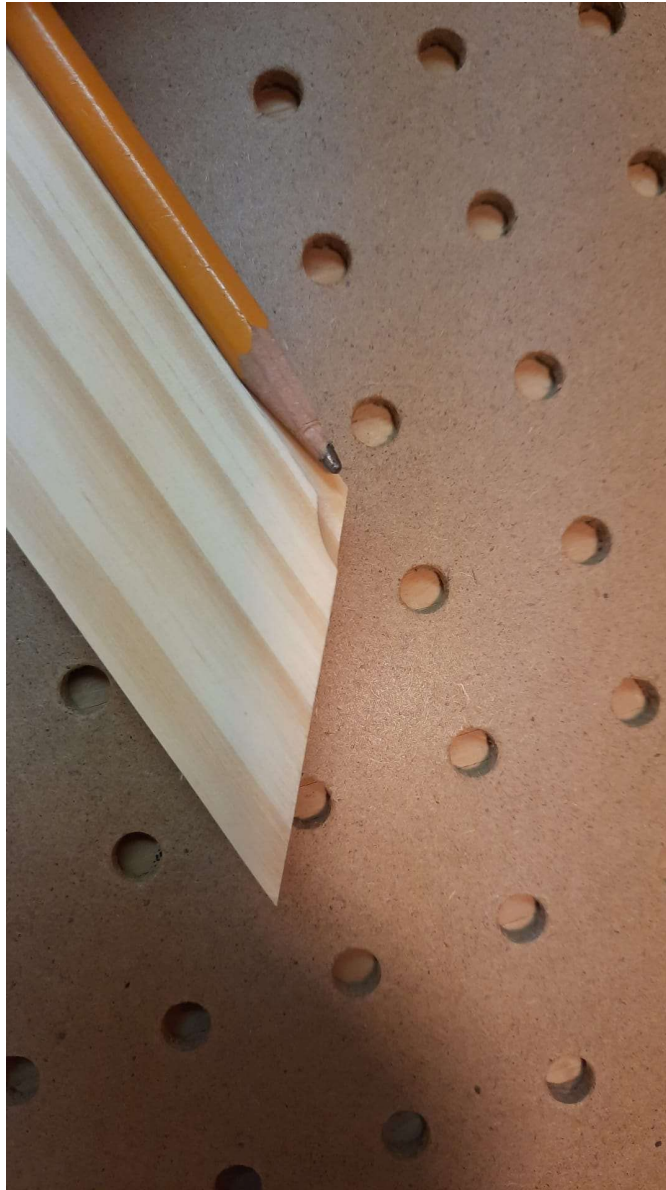




The four corners before sanding and glue
Gaps identified above.

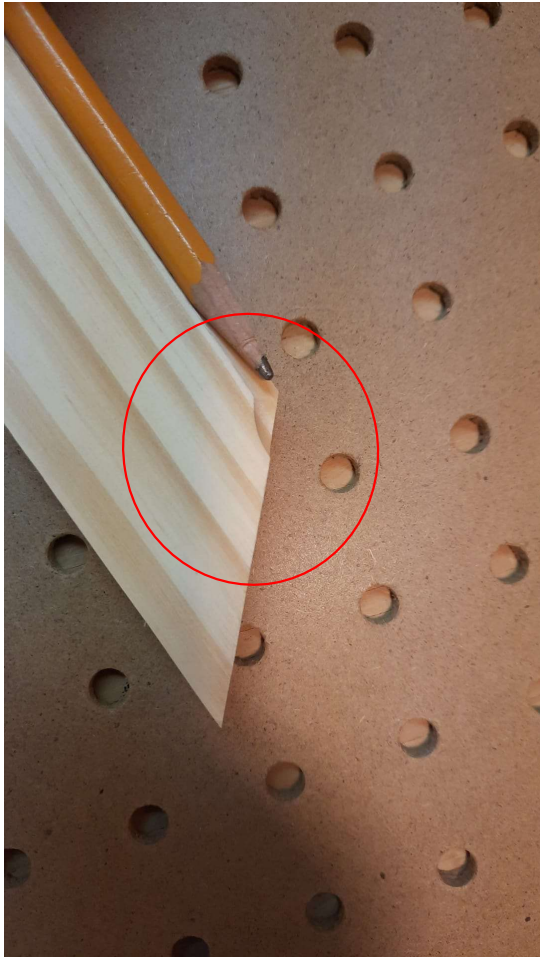
I don't have a fence yet.. Thinking of building one for now.. Budget constraints

Used simple 1/4" bits for some internal and external shapes.



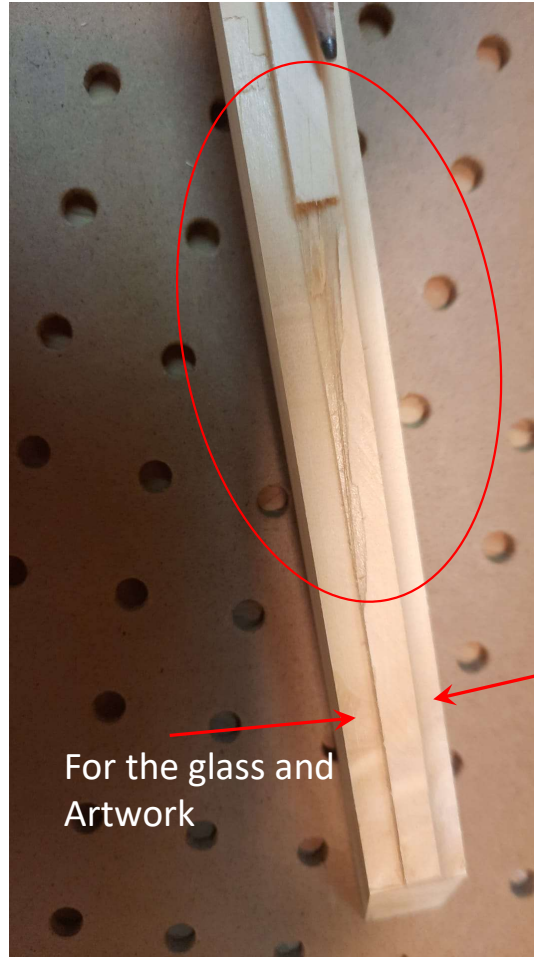
Question:

Is this because of not having fence?



Question:

This happened when I was doing the pass for the bottom side on the router.



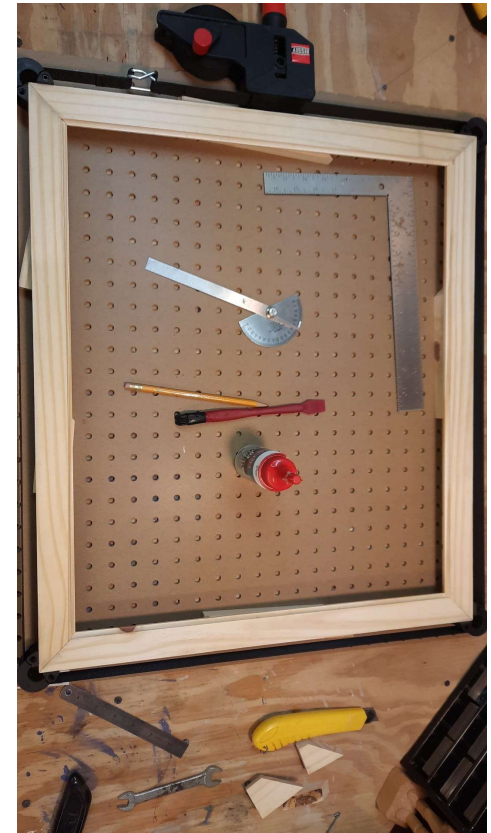
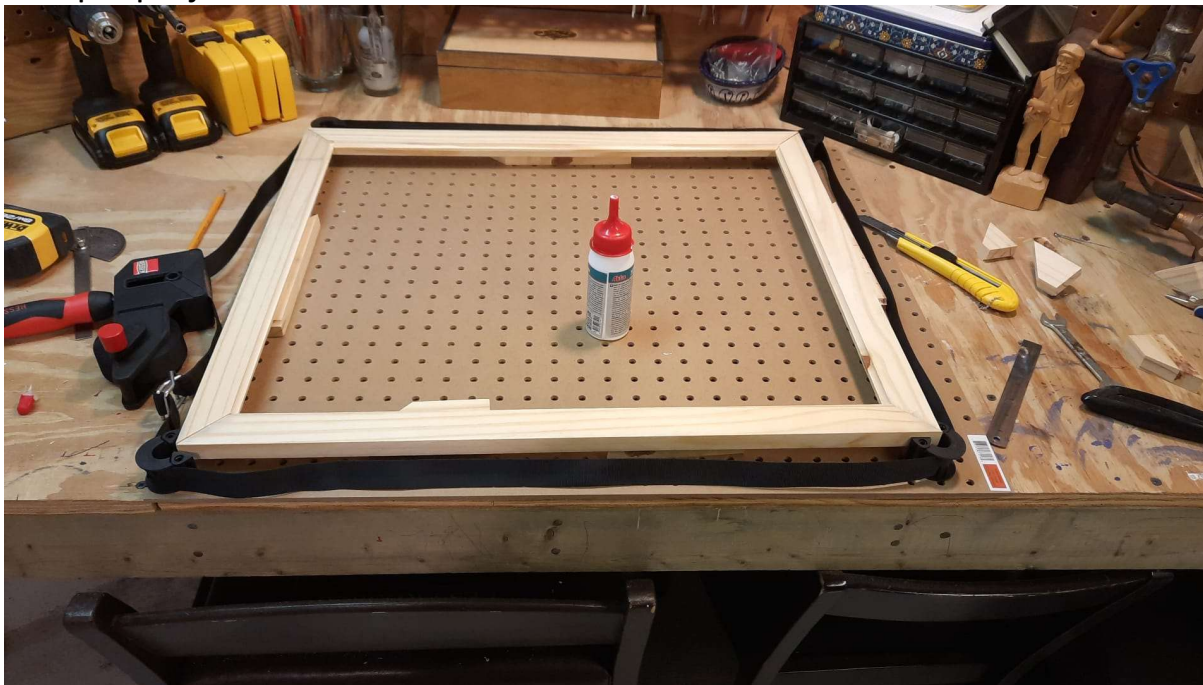
The front face of the frame

For the glass and
Artwork

I just put glue on this project. No enforcement.

Question:

What would you recommend for reinforcement of the corners of a simple project like this?



Sand and finishing the external profile of the frame with the router



Final product!



Question:

What would you recommend as next step?